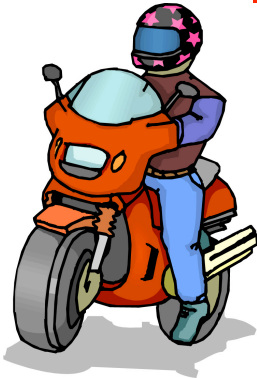
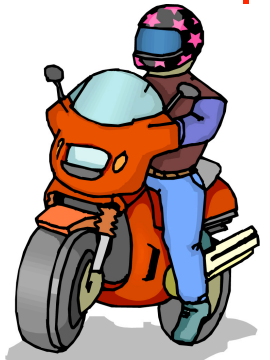


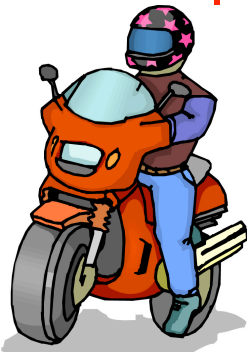
**Grab
That
Bike!**



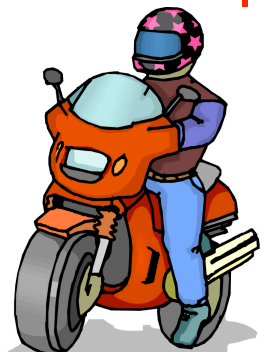
**Grab
That
Bike!**



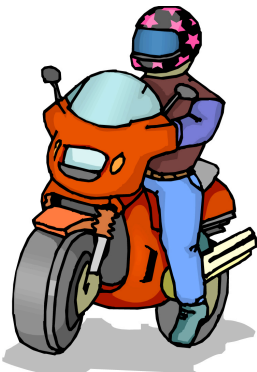
**Grab
That
Bike!**



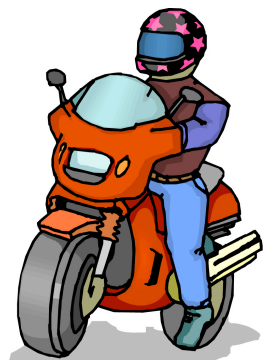
**Grab
That
Bike!**



**Grab
That
Bike!**



**Grab
That
Bike!**



Question #55 Unit III: What are the steps in starting the engine?

Answer: FINE-C which is: fuel supply valve, ignition, neutral, engine cut-off (on), choke/clutch (page 19).

Point Value: 10

Question #56 Unit III: What is the friction zone?

Answer: The area of travel of the clutch lever that begins where the clutch starts to transmit power and ends just before the clutch becomes fully engaged (page 20).

Point Value: 5

Question #63 Unit III: What is the three-part shift process?

Answer: Roll off the throttle as the clutch is squeezed; list the shift lever firmly as far as it will go; smoothly ease out the clutch and adjust the throttle (page 22).

Point Value: 5

Question #65 Unit III: How much of a motorcycle's stopping power is available from the front brake?

Answer: The front brake provides 70% or more of the stopping power for your motorcycle (page 23).

Point Value: 3

Question #58 Unit III: List the four steps in turning.

Answer: Slow, look, press, roll.

Point Value: 3

Question #73 Unit IV: What are the three "lead times" (Rider Radar)?

Answer: The 2-second following distance; the 4-second immediate path, and the 12-second anticipated path (page 27).

Point Value: 5

Question #77 Unit IV: Name the three components of total stopping distance.

Answer: Perception distance, reaction distance, and braking distance (page 27).

Point Value: 5

Question #79 Unit IV: Where is the greatest potential for conflict?

Answer: The greatest potential for a conflict between you and other traffic is at intersections (page 30).

Point Value: 3

Question #99 Unit IV: What is "overriding the headlight" and what is the solution?

Answer: When total stopping distance exceeds sight distance; keep speed reasonable for conditions and use other vehicles lights to help with searching ahead (page 36).

Point Value: 10

Question #121 Unit IV: How fast is alcohol eliminated from the blood stream?

Answer: for an adult male, alcohol is eliminated at about "one drink" per hour. For women, it's about three-fourths of that rate.

Point Value: 3